

Winter Operations Impact on Icelandair Network

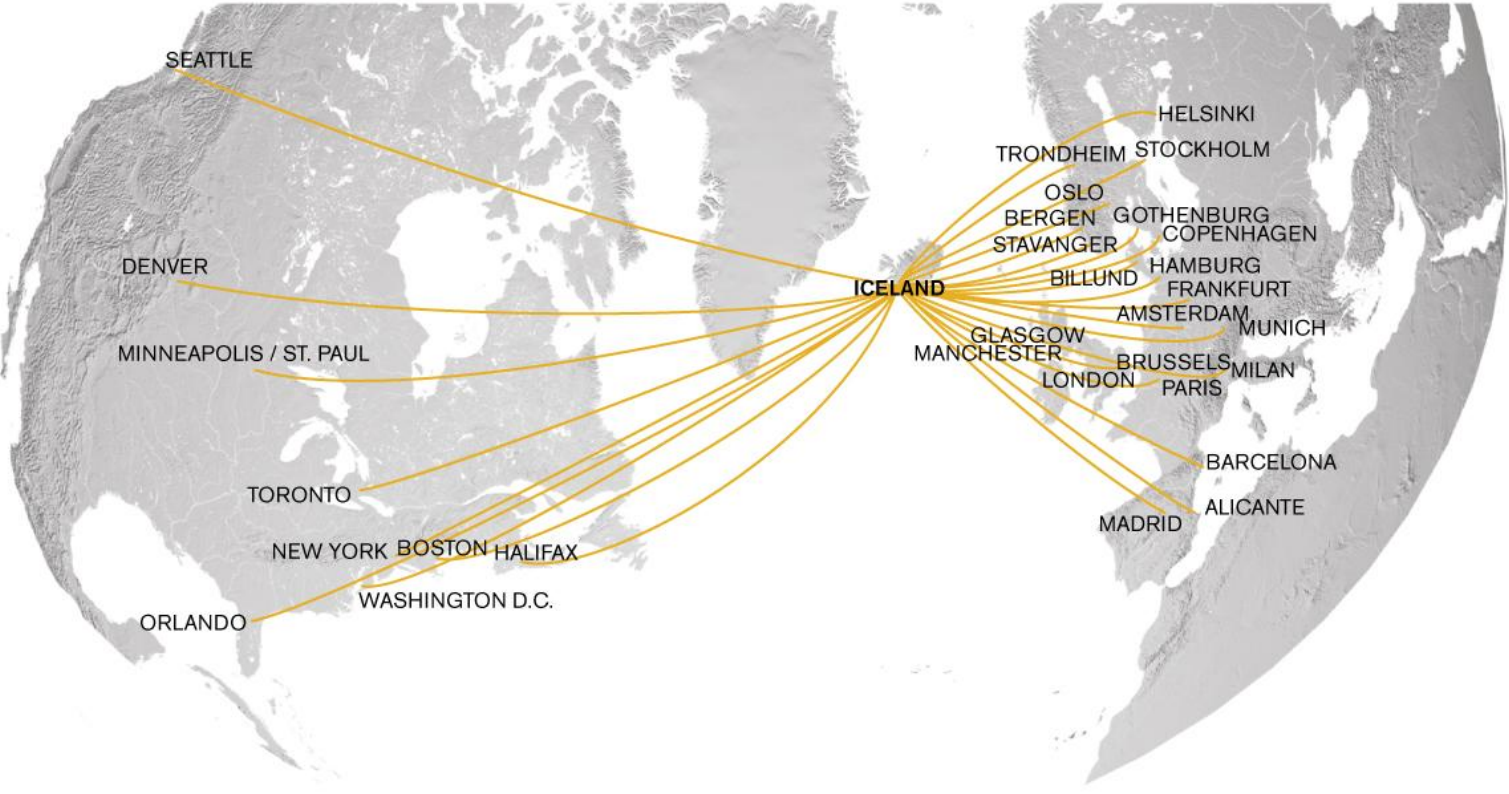


Agenda

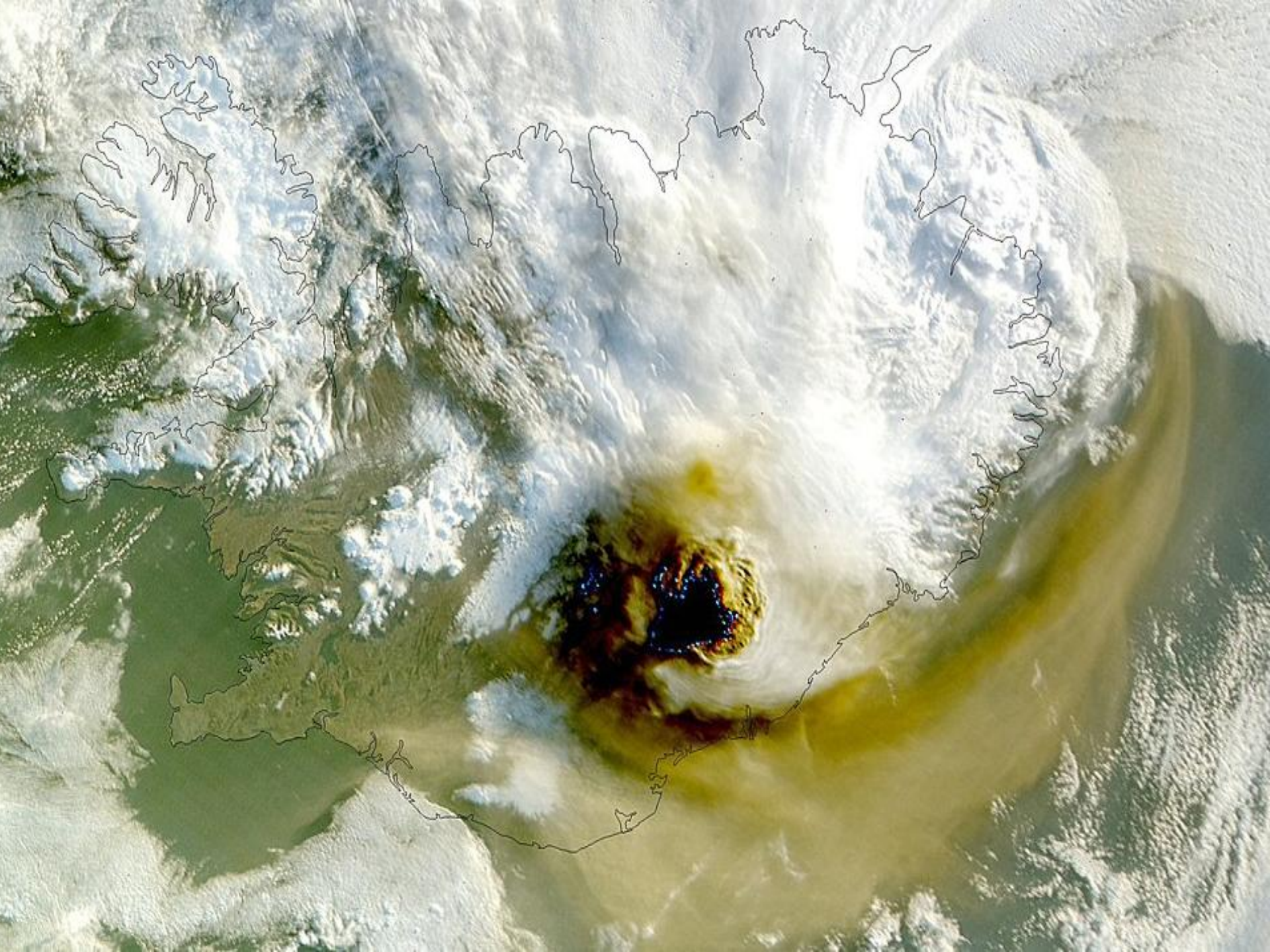
- Icelandair Network
- Weather Impact
- Statistics



Icelandair Network



WWW.ICELDAIR.IS









ISLANDSFLUG

Bluebird
Cargo

ICELANDAIR CARGO

ICELANDAIR

Statistics

"Weather" related delays from January 2010 to September 2011

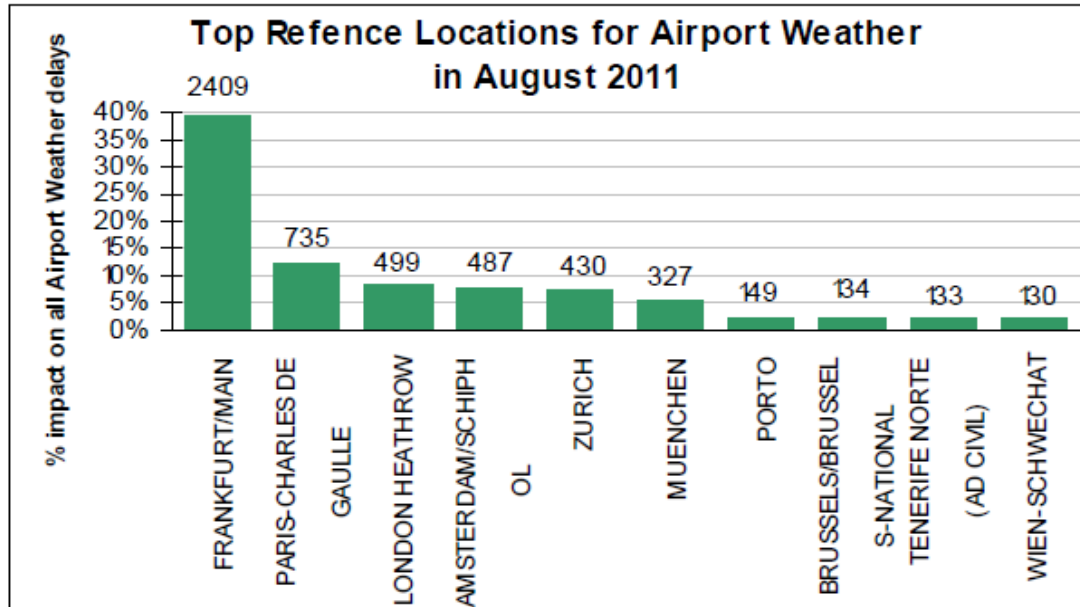
Airport		Delays in minutes	Delays in Hours	Number of Delays	Average Delay
Keflavík	Iceland	7104	118	286	25 minutes
JFK	USA	616	10	13	47 minutes
Boston	USA	244	4	9	27 minutes
Seattle	USA	110	2	1	110 minutes
Heathrow	Europe	320	5	18	18 minutes
Oslo	Europe	79	1	5	16 minutes
Arlanda	Europe	411	7	17	24 minutes
Copenhagen	Europe	425	7	4	106 minutes
..
All stations		10,834	181	397	

- De/Anti Icing / Adverse Weather / Removal of snow
Etc.



Weather Impact

(Ref Eurocontrol NOP)



Frankfurt - ATFM delays were due to thunderstorms, strong wind and low visibility.

Paris CDG - Thunderstorm was the main reason for ATFM delays in August.

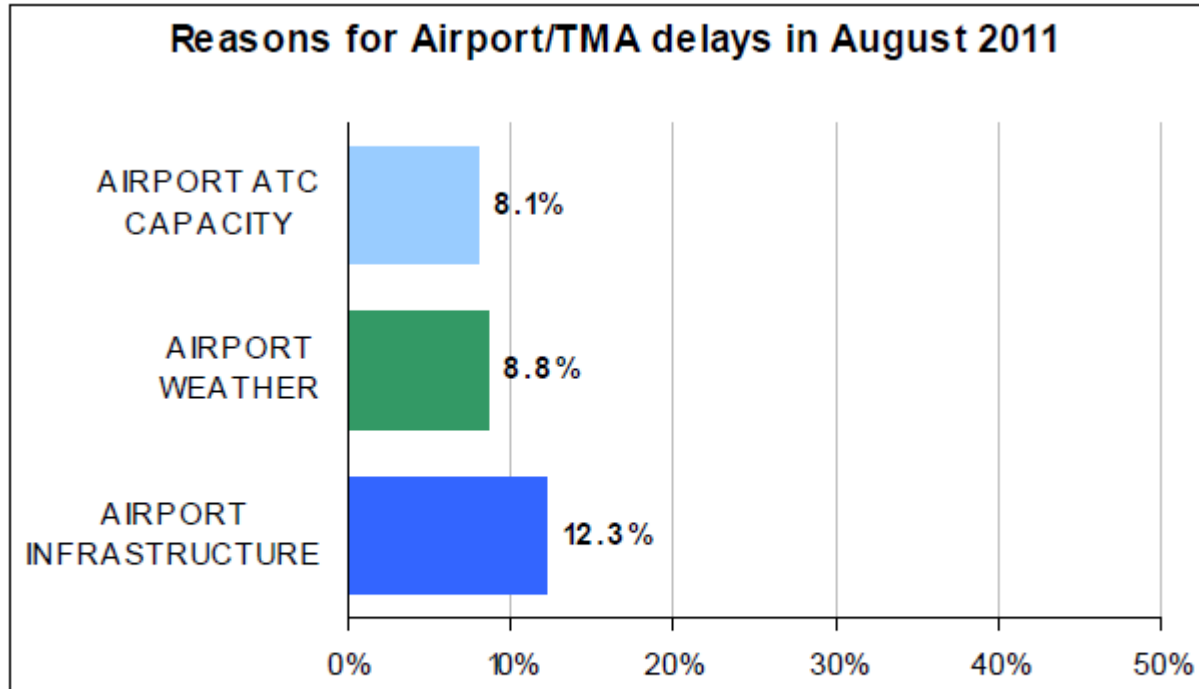
London Heathrow - Thunderstorm and wind were the main reason for ATFM delays in August.

Amsterdam - ATFM delays were recorded due to thunderstorm and fog.



Weather Impact

(Ref Eurocontrol NOP)



Airport/TMA delays accounted for 29.3% of all ATFM delays. Within it, Airport Infrastructure accounted for 42.0%.







Thank you



ICELANDAIR
WWW.ICELANDAIR.IS

