

# **Icelandic winter weather and the effects on airport operations**

---

**Airport and Airlines Winter Operations 2011**

**Theodór Freyr Hervarsson**

**Managing Director**

**Warnings and forecasting division**

**Icelandic Meteorological Office**

- ▶ Winter weather in Iceland
- ▶ Current services
- ▶ Future opportunities

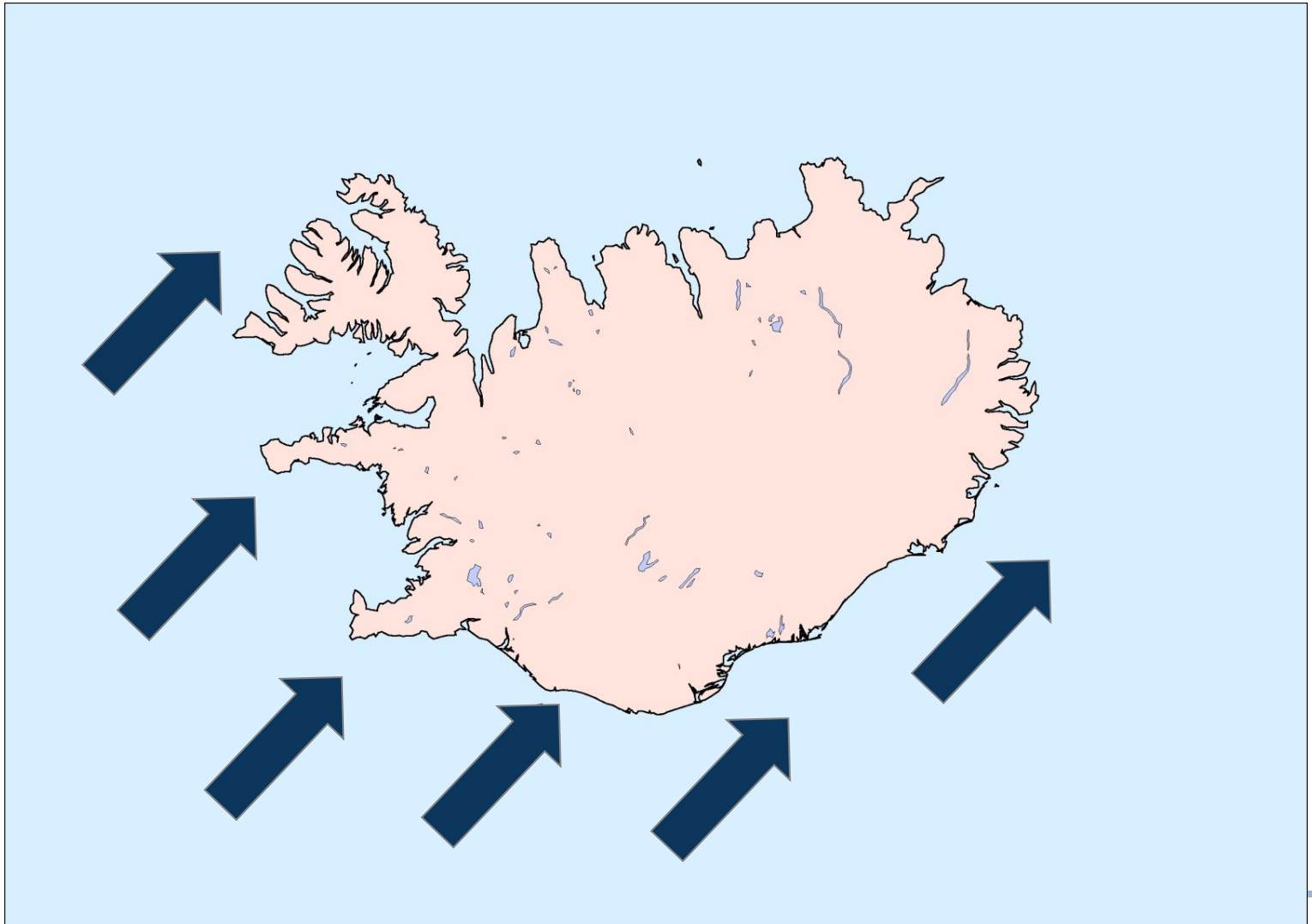
---

# Icelandic Winter weather – Likely impact

---

- ▶ Runway/ramp breaking conditions
  - ▲ snow on ground, icing formation with  $T \sim 0^{\circ}\text{C}$
- ▶ Icing aloft
  - ▲ Especially connected to frontal passage and orographic effects
- ▶ Severe winds affecting operations
  - ▲ turbulence, cross-wind etc.
- ▶ Heavy, prolonged snow events not a frequent issue
  - ▲ Transient synoptic weather systems
  - ▲ Rapid frontal passage in wintertime, usually accompanied by relatively warm core in S- og W-Iceland. Snow events can be more prolonged in the north and eastern part of Iceland, low density traffic.

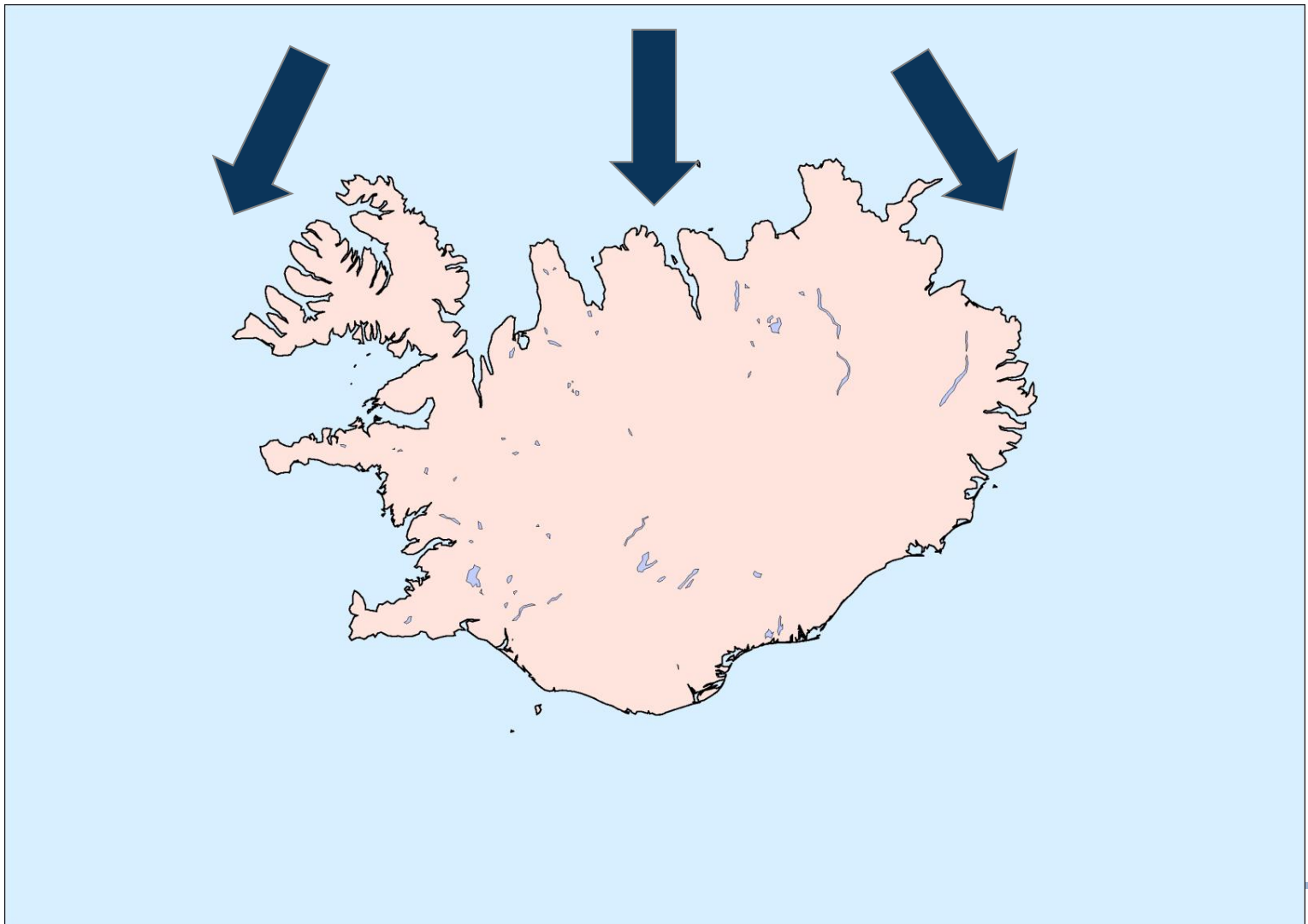
# Icelandic winter weather – Prolonged snow episodes



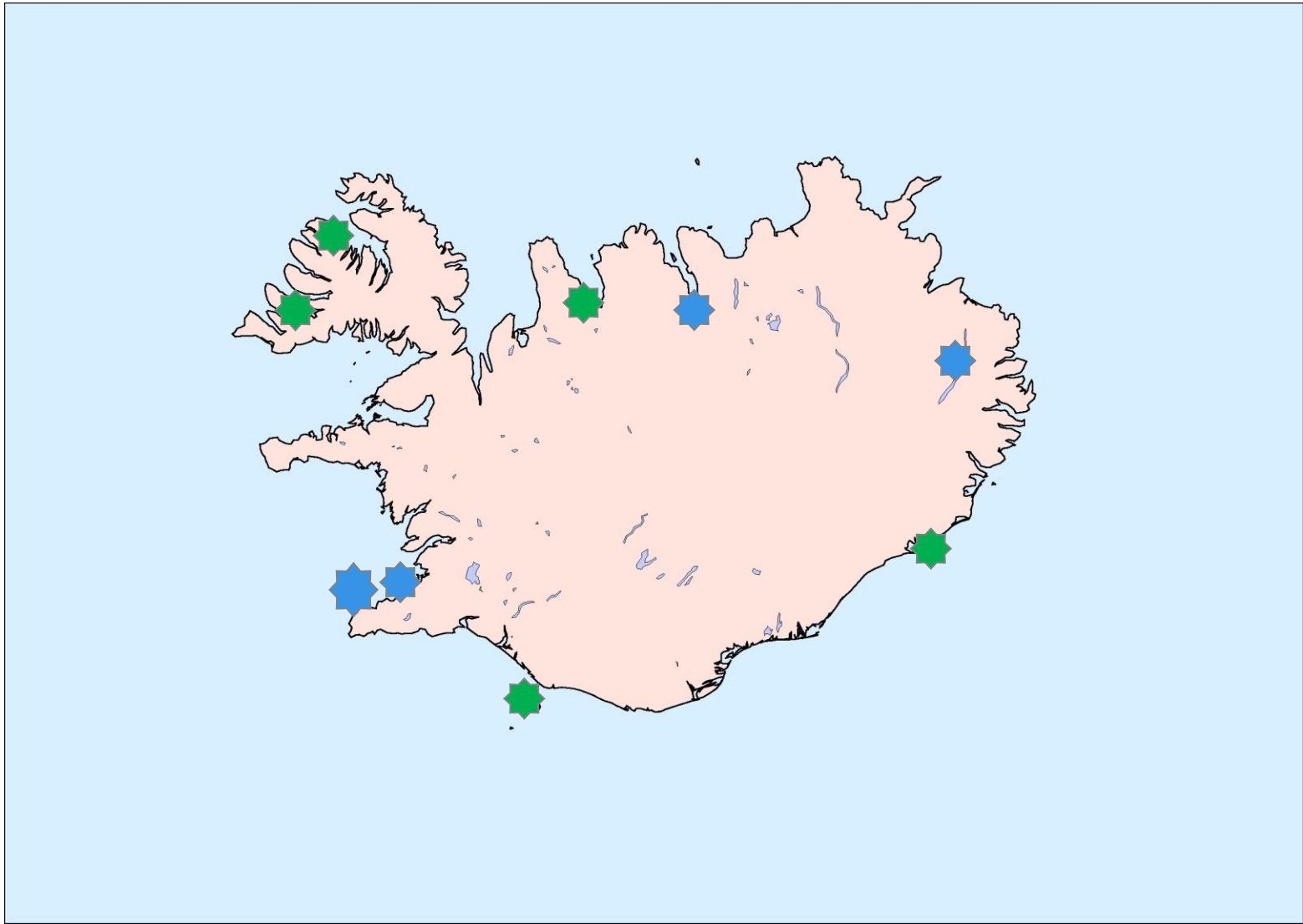
---

# Icelandic winter weather – Prolonged snow episodes

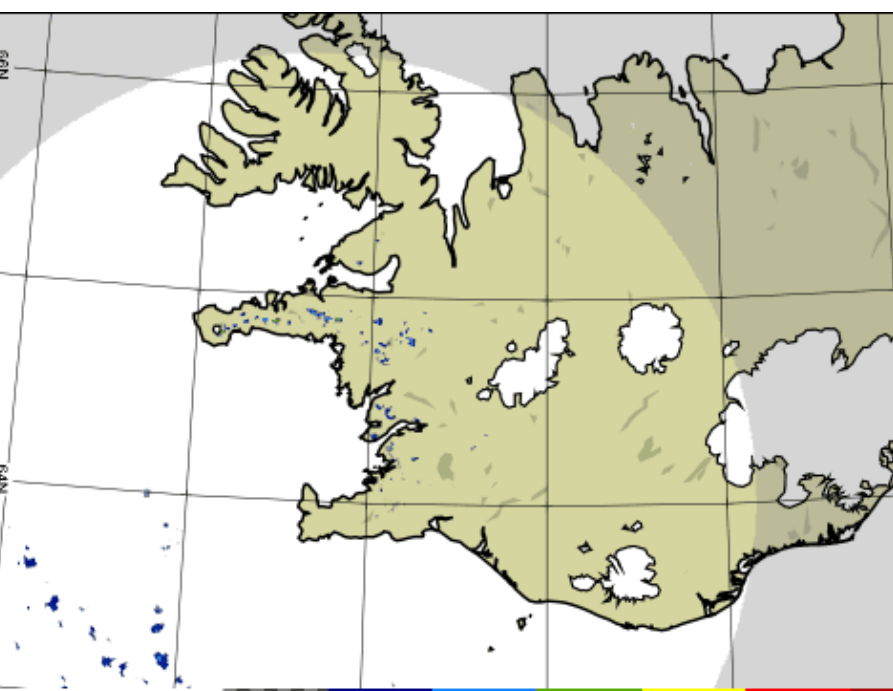
---



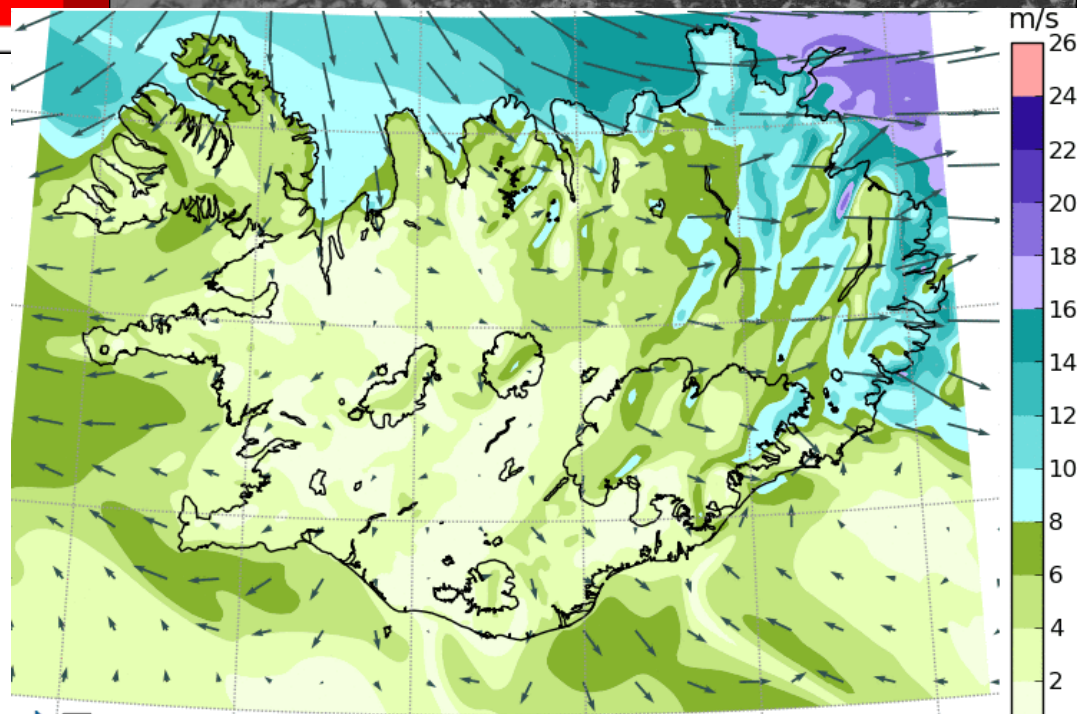
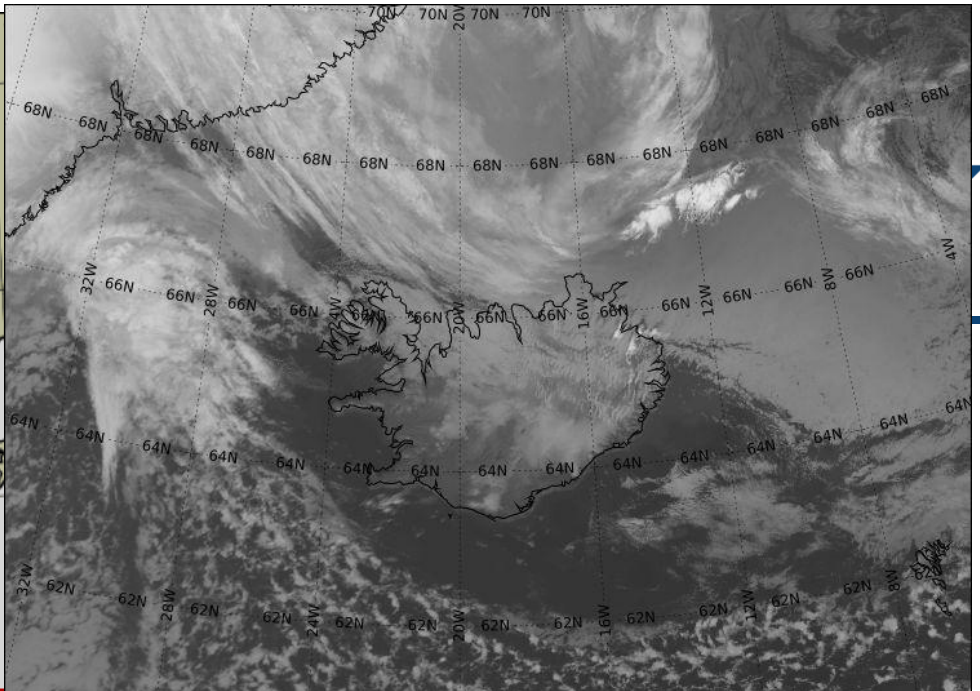
# Current level of services – Airports



- ▶ TAF
  - ▲ => request for additional info on temperature
- ▶ METAR/SPECI
- ▶ Low level forecasts
- ▶ SIGWX
- ▶ SIGMET
- ▶ Several graphical products available
  - ▲ Forecast charts/meteograms
  - ▲ Radar data (SW-Iceland, almost full coverage spring 2012)
- ▶ No specified requests for services to tackle winter operations



Gildistími: 10.10.2011 12:00



A Reiknitími: 10-10-2011 06:00 / Gildistími: 10-10-2011 13:00

# Future opportunities

- ▶ Extended use of remote sensing techniques
  - ▲ Radar derived data;
  - ▲ Satellite derived data
  - ▲ Hazard detection displays
- ▶ Customised forecast products
  - ▲ as specified by the customer
- ▶ Routine briefings
  - ▲ Ensure that CDM is made on proper grounds.

**Thank you!**